



PEFC news

Special General Assembly Issue

Special 7th General Assembly Issue

Contents

Welcome reception in presence of Mr Boden, Luxembourg Minister of Agriculture, Viticulture and Rural Areas.

The Chairman's Report - Extracts

Poland: newest member of PEFC Council

Australia submits scheme for assessment process

PEFC name changed to mean " Programme for the Endorsement of Forest Certification schemes "

Election of a new Board of Directors

Keynote speech by Mr Pekka Patosaari, Head of UNFF Secretariat, on " the role of Intergovernmental processes for the promotion of sustainable forest management on certification."

http://www.pefc.org/internet/html/documentation/4_1311_403.htm

Adoption of statement: PEFC support for UNFF

The next General Assembly will be held in Chile in October-November 2004.



Editorial

by Ben Gunneberg
Secretary General

The 7th General Assembly has been an important one in the ongoing development of the PEFC Council.

Not only have we changed our name to reflect the global nature of PEFC's work and representation, we have also seen Poland join and Australia be the second non European scheme to be submitted for the assessment process. In addition members have decided to hold the 8th General Assembly in Chile in Oct/Nov next year.

A new Board has been elected reflecting the increasing geographical diversity of members and from now on, one third of the Board places are up for re-election each year. Seven new directors join the three that were re-elected as well as the Chairman and two vice chairmen who have been elected to serve for another term. Details on each of the directors are provided in this newsletter.

We were very pleased to have Mr Pekka Patosaari, Head of the UNFF Secretariat join us and give the key note speech. His presence provided the opportunity for PEFC members to pass a motion supporting the strengthening of the UNFF as the principal body at a global level to achieve a balanced approach to sustainable forest management. Finally for those who haven't visited our web site recently, please note that it has been revised and is continually being improved to meet user expectations.

Welcome Reception

On Thursday 30th of October, Mr Henri Plauche-Gillon, Chairman of PEFC Council welcomed all delegates to a reception at the Sofitel-Hotel in Luxembourg. Special guests were Mr Fernand Boden, Luxembourg Minister of Agriculture, Viticulture and Rural Areas and Mr Pekka Patosaari, Coordinator and Head of the Secretariat of the United Nations Forum on Forests (UNFF).

In his speech, Minister Boden underlined Luxembourg's pride in being the host country of the international headquarters of the PEFC Council and that a national PEFC Luxembourg, also a member of the PEFC Council, was developing a scheme for the certification of Luxembourg's forests. This national scheme was



Mr Fernand Boden, Luxembourg Minister of Agriculture, Viticulture and Rural areas.

Mr Crochet, (PEFC Luxembourg) Mr de Schorlemer (PEFC Luxembourg), Mrs Crochet, Mr Tymrak (PEFC Council)



being developed in a an open multi stakeholder process and would be in compliance with the international commitments signed up to by Luxembourg including the Ministerial Conference on the Protection of Forest in Europe. Mr Boden hoped that this scheme would soon be ready to be submitted to undergo the PEFC Council's mutual recognition procedures.



Mr. Peter Johnson (CSA-Canada) Ms Anke Schulemeister (PEFC Germany), Mr Mark Edwards (Australian Forestry Standard Ltd)



Mr Boden, Luxembourg Minister of Agriculture and Mr Henri Plauche-Gillon, Chairman of PEFC Council.

Mr Chew Lye Teng (MTCC-Malaysia) Mr Folke Stenstrom (PEFC-Sweden), Mr Eduardo Morales (Chile)



Mr Juan Botey-Serra (former PEFC Council Director), Mr Azpitarte Josu (PEFC Spain) and Ms Marta Salvador (PEFC Spain)

The 7th General Assembly 31st October 2003

Chairman's report - extracts

The Chairman reported that the last 11 months had been a time of consolidation after the massive increase in membership and complete revision of the PEFC Documentation at the last General Assembly. However growth had continued at a steady pace with the amount of certified hectares under endorsed schemes having risen 4.5 million to more than 48.5 million hectares. Chain of Custody certificates issued had more than doubled in that time bringing the current total to 880.

The Czech Chain of Custody was the first new one to be successfully assessed against the new rules endorsed at the last General Assembly and all schemes that had an existing endorsed chain of Custody (Austria, Belgium, Denmark, France, Sweden and the UK) were currently having these reviewed by the Panel of Experts to ensure they meet the new PEFC Council requirements.

On 22nd of October, the public consultation on the Italian scheme commenced and the Chilean scheme assessment process will follow shortly. Later that day, Australian Forestry Standard Ltd submitted the Australian scheme to undergo the assessment process.

PEFC has continued its dialogue with the International Accreditation Forum and the European Co-operation on Accreditation and has applied for membership of the former. PEFC has also applied for membership of UNFF. In addition PEFC has continued to actively participate in a wide range of discussion forums including the dialogue with the International Forest Industries Roundtable and the World Business Council for Sustainable Development concerning their Mutual Recognition activities. PEFC has also participated in the certification scheme executives' meeting between major forest certification schemes facilitated by the FAO and the Forest Dialogue. Consultations continue to form a large part of PEFC's work including the European Commission's work on combating Illegal Logging; the European DIY Retail Association on its procurement policies; FERN's revised assessment of certification schemes to name but a few.

PEFC Council welcomes Poland as new member

Dr Jaroslaw Oktaba, Chairman of PEFC Polska, presented the application by "PEFC Polska", to become a member of the PEFC Council through SITLiD, the Association of Foresters and Wood Technologists. PEFC Polska, he noted, has been established to create and implement an independent national Polish forest certification system that intends to become mutually recognized within the PEFC Council.



Dr. Jaroslaw Oktaba, Chairman of PEFC-Polska
presenting their application.

PEFC-Polska will develop a Polish forest certification system based on the relevant Intergovernmental processes promoting sustainable forest management, Polish law and on the rules and requirements contained in the PEFC Council documentation such as the core ILO conventions etc.

The objectives of "PEFC Polska" are the following: support of sustainable forest management, use of timber as ecologically recycled natural resource, promotion of wooden products, natural protection and stable, balanced development of forestry via the Polish certification system and supporting the interest of its members.

The 35 organizations involved in the PEFC-Polska initiative include forest owners' organizations and their organizational units; non-governmental ecological organizations; wood working industries; scientific and educational institutions; trade unions and several other organisations including the press.

The application was unanimously approved.

Australia submits scheme for assessment



From the left: Dr Hans Drieslma (Australian Forestry Standard Ltd – AFS Ltd) Mr Mark Edwards (AFS Ltd), Mr Ben Gunneberg (PEFC Secretary General) and Mr Henri-Plauche-Gillon (Chairman of PEFC-Council)

The Australian Forestry Standard Ltd, AFS Ltd, used the occasion of the General Assembly to submit the Australian Forest certification scheme to the PEFC Council to start the assessment process. A tender process is currently underway and the successful independent consultant when selected will then undertake the assessment process that includes an invitation for comments from the public as part of a public consultation. The candidate scheme will be posted on the PEFC website www.pefc.org for all to view or download, when the consultant commences his work.

Alteration to the PEFC Name

The PEFC Council (formerly known as the Pan European Forest Certification Council) has extensively extended its geographical coverage during its development over the last four years. European and non-European forest certification schemes are currently included in its membership. The PEFC Council now provides the opportunity for the mutual recognition of national or sub-national forest certification schemes from all over the world.

In recognition of the international nature of PEFC, the General Assembly decided to keep the initials “PEFC” and to approve a new meaning to the letters. PEFC is now known as the **“Programme for the Endorsement of Forest Certification schemes”**.



Eduardo Morales (Fundacion Chile)



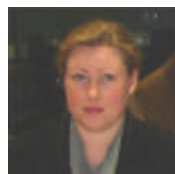
Jari Parviainen (Finnish Forest Certification Council)



From the left : Pekka Patosaari (UNFF), Michael Clark (PEFC Council new Director), LenYull (PEFC UK) Mark Edwards (AFS Ltd)



Sven Lundell (PEFC Sweden)



Elisabeth Gill (PEFC Norway)




Antonio Brunori and Pier Luigi Ferrari (PEFC Italy)




Natalie Hugnagl (CEPF) and Tanja Olsen (PEFC Denmark)

Election of new Board of Directors

Seven new Board members, three existing Directors and the Chairman and two vice chairmen were elected at the General Assembly to form the new PEFC Council Board of Directors. The composition of the Board aims to reflect the major interested parties who support PEFC, the geographical distribution of members, their size category and an appropriate gender balance. Directors are elected for three years with one third of Board places being eligible for election each year from now on. The background information below was provided by the Directors.

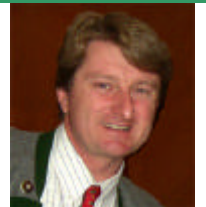
<p>Henri PLAUCHE GILLON</p> <p>Chairman</p>	
---	---

Henri Plauche-Gillon has been Chairman of the PEFC Council since its official launch in 1999. He is president of his local, regional and national forest owner organisations in France. In addition he is president of Union Forestière de l'Est, an umbrella for professional and private forest management organisations in Alsace Lorraine. At an international level Henri is also a vice president of CEPF. A landowner, Forest Engineer and graduate in Law and Economy, Henri Plauche Gillon has been fully involved in forestry matters for all his working life. In recognition of his services to forestry nationally and internationally, he has been decorated by both France and Finland.

<p>Hannu VALTANEN</p> <p>1st Vice Chairman</p>	
---	---

Hannu Valtanen has been the PEFC Council's first Vice Chairman since June 1999. He has been actively involved in promoting the PEFC scheme, speaking on numerous occasions in Russia, Australia, South America, across Europe and North America. He has frequently given interviews and comments on the PEFC Scheme and is Chairman of

several task forces and working groups, including the Chain of Custody working group and the Promotions Project Management Team (PPMT). Hannu Valtanen is well known in forest industry circles around the world.

<p>Christian BRAWENZ</p> <p>2nd Vice Chairman</p>	
--	---

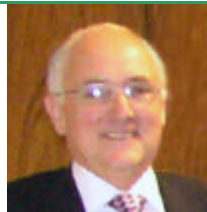
Christian Brawenz has been the 2nd Vice Chairman of PEFC Council since 2001 and also holds the position of the General Secretary of the Austrian Association of Private Farm and Forest Owners. He has been actively involved with the PEFC initiative from its earliest stages. He brings a combination of his knowledge of legal issues and his experience in forestry.

<p>Phil DAVIES</p> <p>Member</p>
--

Phil Davies joined the ASWCM union in 1962, which later became the Furniture, Timber and Allied Trade Union (FTAT). Phil Davies served an apprenticeship as a wood machinist and worked in the joinery industry; furniture industry; caravan industry; boat building; shop fitting industry and building industry. He served as Shop Steward and Senior Convenor in all these industries and was Group Convenor at Schreiber Furniture for 6 years.


In 1976 he was elected to the General Executive Council of the FTAT, becoming President of the Union in 1982 and elected as National Secretary in 1989. After the merger of FTAT with the GMB (Britain's General Union, representing some 700,000 members) in January 1994, he became the National Secretary of the CFTA (Construction, Furniture, Timber and Allied) Section. Since 1994 he has also been involved in representing the disabled members throughout the GMB. He is currently responsible for pay and conditions negotiations within the following industries: Remploy, furniture, funeral, saw milling, glass, organ building, floor laying, brush, artificial limbs, construction and Terminal 5.

Phil Davies has seats on the following bodies: FFINTO, FTBA, Ethical Threads, CONIAC and Furniture Forum.

<p>Michael CLARK</p> <p>Member</p>	
--	---

Michael Clark has been actively involved with forest certification issues since 1994, representing the interests of M-Real's wallpaper base mills in negotiations with the WWF 1995+ group and with the main international ENGOs. He has attended numerous conferences on forest certification both in the UK and abroad and has been actively involved in the debate with paper buyers and ENGOs.


Michael Clark has worked as a senior executive in the UK with the Finnish paper and board industry since 1984 and as a past president of the UK Paper Agents Association and a council member of the UK Confederation of Paper Industries, has been involved representing the interests of the paper sector on forestry issues with the UK Government and other industry bodies.

<p>Paul WOODING</p> <p>Member</p>	
---	---

Paul Wooding received a Bachelor of Science in Forestry (BSF) from the University of British Columbia in 1975 and has been a Registered Professional Forester (RPF) with the Association of British Columbia Professional Foresters since 1977.

He held various forestry positions with British Columbia Forest Products Limited between 1975 and 1984. In June 1984 he joined Canadian Forest Products Ltd. (Canfor) as an Administrative Forester, served as Divisional Forester at the company's Engelwood Logging Division from 1991 to 1992 and is currently Manager, Forestry Certification and Market Access with Canfor's Corporate Forestry and Environment Department in Vancouver. His current duties include co-ordinating Canfor's efforts in sustainable forest management certification and acting as a liaison with the company's customers on matters of forest management and certification.

Paul Wooding has been an active member of the Canadian Standards Association (CSA) Technical Committee on Sustainable Forest Management since 1994, responsible for drafting Canada's National Standard for SFM and also serves as the Chair of the Canadian Sustainable Forestry Certification Coalition Working Committee. He chairs the Canadian Advisory Committee to the PEFC Council.

<p>Ulf ÖSTERBLOM</p> <p>Member</p>	
--	---

Ulf Österblom is the Deputy Managing Director, Head of Forestry Division of the LRF – Federation of Swedish Farmers. He has a Master of Science in Forestry and is a member of the Royal Swedish Academy of Forestry and Agriculture.

Ulf Österblom has been engaged in forest certification since 1992 and participated in the strategic work to develop the PEFC as a concept for certification based on the Ministerial Conference on the Protection of Forests in Europe (MCPFE). He was a key player from Sweden in the development and founding of the PEFC Council and Scheme.

In recent years he has undertaken specific tasks for the PEFC Council, as chairman of the Mutual Recognition Working Group in developing and elaborating strategies for mutual recognition. Ulf has broad international experience and contacts in forest policy work related to the United Nations, EU, MCPFE, Nordic Ministerial Council and other international fora. He is also active in Nordic and European Forestry Organisations.

As Vice President of LRF, Ulf Österblom plays a key role in the policy and strategy development for Swedish Forestry. In this context, he has contributed to create good conditions for building the national PEFC system of Sweden.

**Dr. Hans
KÖPP****Member**

Hans Köpp was born in 1937 at Eberswalde. He has degrees in Forestry from the universities at Göttingen and Oxford, England, with practical work experience in Germany, UK and North America. He served as senior district officer in the lower Saxony state forest service and turned to an academic career with a PhD in Forestry.

He worked for the Council of Europe in Strasbourg during the first European Conversation Year (1970) and for the first European Environmental Year (1987/88). He served with the new Northern Germany Academy for Nature Conservation and became its first Director (1982/88). As Professor for Nature Conservation, Forest Policy and Forest History, he served at the University for Applied Sciences at Göttingen for 20 years.

His international experience is well established: with missions from FAO in Iran and UNESCO in Greece. He was the editor of the international journal *Nature and National Parks* (now EUROPARC) and a member of the Federation for Nature and National Parks in Europe. He is active with the Boards of various environmental organisations in Germany (BHU, AGU, SDW and VDG*).

He is a member of the German Forestry Council (DFWR), and Vice Chairman of PEFC Germany and represents the European Environmental Bureau (EEB/Brussels) in the Advisory Committee for Forestry and Cork with the European Commission. He has been active for many years in IUFRO and IUCN (as Chairman of the former NW Europe Committee of the IUCN's Commission on Education).

He has served as a PEFC Council Board member since 2001.

- * BHU = Bund für Heimat und Umwelt
- * AGU = Arbeitsgemeinschaft für Umwelt
- * SDW = Schutzgemeinschaft Deutscher Wald
- * VDG = Vereinigung Deutscher Gewässerschutz

**Marian
FREIHERR VON
GRAVENREUTH****Member**

Marian Freiherr von Gravenreuth was born in 1949 in Augsburg. He is Chairman of the Bavarian Forest Owners Association and a member of the Executive of the German Group of Forest Owners Associations (AGDW). On a European level he is vice-president of the Confederation of European Forest Owners (CEPF) and he is a member of the Permanent Forestry Council of the European Commission. Since the foundation of PEFC Germany, Marian Freiherr von Gravenreuth has been Chairman of this National Governing Body. Since 2001, he has been a member of the PEFC Council Board of Directors.

**Josef
BARTON-DOBENIN****Member**

Josef Barton was elected to the chairmanship of PEFC Czech Republic in the fall of 2001. His experience is primarily in the legislative, political and diplomatic side of forestry in that having grown up in Canada, his experience with private property rights and private property legislation belies his residency and citizenship in Central Europe. His forestry background is only 11 years old, having had restituted to him his family's properties in the Czech Republic in 1991 and 1992.

As a forest property owner, Mr Barton has been a member and vice chairman of the Association of Municipal and Private Forest Owners in the Czech Republic since March 2000. Since April 2001 he has represented the association at the general assemblies of the Brussels based Confederation of European Forest Owners (CEPF) and has attended the Vienna MCPFE as a member of the CEPF delegation for Central Europe. Mr Barton is also a majority owner and chairman of the board of a mid-sized textile company in the Czech Republic. Fluent in both Czech and English, he is 61 years of age.

**Sébastien
GENEST**

Member



Sébastien Genest is the Administrator, and also the Director with Forest responsibilities of *France Nature Environnement*, the French national federation of some 3000 local and regional Environmental NGOs. A member of the “ Conseil Supérieur de la Forêt, des Produits Forestiers et de la Transformation du Bois (High Council for Forestry, Forest Products and Wood processing) and its Committee on Forest policy, Sébastien Genest is also on the Board of the «Office National des Forêts” (National Office of Forests) and is the Vice Chairman of PEFC France.

From an early age, Sébastien Genest has been involved in numerous environmental organisations dealing with the study and protection of nature. His main interests are in the protection of the forest heritage and to promote in France and abroad a forest management that respects the environment and biological diversity. He has written several papers on the need to integrate biodiversity in forest practices and policies and to translate intentions and theories for sustainable forest management into concrete applications. Sébastien Genest has served on the PEFC Council Board of Directors since 2001.

**Luis
COSTA LEAL**

Member



Luis Costa Leal is currently Director General of CELPA (the Portuguese Pulp and paper Association). He graduated with a degree in forestry in 1981 and worked until 1996 in CELBI, a Portuguese pulp company, with responsibilities for growth modelling in silvicultural experiments on plantation forests; forest mapping and inventory and strategic forest planning.

He was also in charge of the research centre; an advisor to the managing director on environmental issues; project leader for the construction of a forest nursery (producing 5 million seedlings per annum) and for the development and implementation of computerised operational planning and follow-up systems for all forest operations. From 1996 to 2000, as the forest advisor to the Portuguese Minister for Agriculture, Luis Costa Leal

was responsible for the preparations of the third Ministerial Conference on the Protection of Forests in Europe (the Lisbon Conference). He gained considerable international experience whilst heading the Liaison Office of the Pan European Process where he negotiated the issues for adoption at the Lisbon Conference. The Lisbon Conference Reports, the Pan European Operational Level Guidelines for sustainable forest management and the work programme for the conservation and enhancement of forest biological diversity were all prepared during this period. From 1999 to 2000, he was the forest advisor to the Secretary of State for Agriculture and in 2000 he became Director General of CELPA.

**Robert
SIMPSON**

Member



Robert S Simpson is Vice President of the American Forest Foundation (AFF) and National Director of the American Tree Farm System, the oldest and largest third party forest certification system in the United States. He was elected to that position in April 1994, after a 16-year career as a field management forester. His responsibilities at AFF include overseeing and administering the Tree Farm System's certification program as well as the conservation education and outreach component for family forest owners.

In 1984, Bob Simpson was employed with Chesapeake Corp, Virginia, as procurement forester and then land management forester going on to design and co-ordinate Chesapeake's landowner assistance program and external communications program.

The Governor of Delaware appointed him to represent Delaware's forestry community on the Governor's Freshwater Wetlands Roundtable. In addition, he chaired Delaware's Best Management Practices Roundtable as they developed the State's BMPs and served as President of the Delaware Forestry Association.

Having graduated in 1979 with a BSc in Forest Resource Management from Virginia College of Forestry and Wildlife, Bob Simpson went on to work for Champion International, Timberlands Division, in Missoula, Montana until 1983.

The AFF is an independent 501c foundation dedicated to improving the active stewardship of America's natural resources through education and landowner outreach.

Summary of Presentation By Mr Pekka Patosaari, UNFF Coordinator and Head of Secretariat

During the General Assembly, Mr. Patosaari gave a keynote speech, the whole text of which can be downloaded from the PEFC website http://www.pefc.org/internet/html/documentation/4_1311_403.htm

Mr Patosaari started by congratulating PEFC for the substantial progress achieved in promoting the management, conservation and sustainable development of forests. He stated that the PEFC process shows that regional cooperation can foster sustainable forest management (SFM) and translate policies into concrete actions on the ground.

The International Context

Mr. Patosaari then reviewed the broader international context of promoting SFM. In October 2000, ECOSOC had established the United Nations Forum on Forests to promote "*... the management, conservation and sustainable development of all types of forests and to strengthen long-term political commitment to this end...*" based on the Rio Declaration, the Forest Principles, Chapter 11 of Agenda 21 and the outcome of the IPF/IFF processes and other key milestones of international forest policy.

In order to promote sustainable forest management in other regions of the world, Mr Patosaari was of the view that the focus should be on the application of low-impact forestry practices, clarification of land tenure arrangements and access to natural resources, as well as, more the equitable sharing of benefits arising from forests, the reduction and eventual elimination of illegal logging and trade in illegally harvested forest products, and the conservation of biodiversity in forests.

Furthermore, efforts should more effectively link sustainable forest management to mitigating climate change, and link forests as an essential element to the overall economic and cross-sectoral decision-making processes.

International cooperation on forests faces new challenges in particular how to focus interventions effectively and efficiently on poverty reduction and sustainable livelihood goals.

Challenges to international forest certification processes.

Mr Patosaari noted that markets for certified wood are still in a developing phase. He was of the view that, the region where forest certification would be most urgently needed now, is Sub-Saharan Africa.

He stated that sometimes forest certification had been mentioned as a means of saving the world's forests. This type of discussion moves the debate to an area where public perception is more important than the facts. The support or lack of support from some NGOs seems to determine public perception and this can also have some relevance from a marketing point of view. He was of the view that the present confusion in the market would not prevail much longer. On the one hand there was a need for quality consensus building between schemes, but, he said, PEFC was already strong enough to stand alone and deliver, regardless of the final outcomes of mutual recognition discussions between schemes.

He maintained that PEFC is a good model, as a framework, for mutual recognition of national or regional forest certification schemes and that it was a credible forest certification umbrella organization covering national schemes from all over the world, delivering hundreds of millions of tonnes of timber to the processing industries from tens of millions of hectares of certified forests.

Mr Patosaari noted that instruments supporting SFM had been a core of international forest dialogue recently, and as a market based, voluntary instrument forest certification has the potential to significantly contribute to SFM. However there were challenges outside and affecting the forestry sector such as impacts of international trade on agricultural policies. Further liberalization is likely to have significant impact on forest areas in developing countries encouraging increased conversion to agricultural land. He encouraged all to work hard to secure WTO decisions on ecolabelling which would support the objectives of voluntary forest certification. WTO definitions of environmental goods should also cover sustainably harvested forest products, thereby improving market access for such products and providing an incentive for their production.

UNFF Role

Since October 2000 the United Nations Forum on Forests (UNFF), with universal membership of all United Nations member countries, has been the high-level intergovernmental body, meeting annually to address a number of issues of priority concern for the international forest community and to review progress in implementation of the IPF/IFF proposals for action. The UNFF was established as a policy mechanism to promote the management, conservation and sustainable development of all types of forests in a holistic manner, and UNFF serves as the key intergovernmental body for comprehensive, international forest policy formulation and implementation.

Mr
Patosari
During
his key-
note speech
at the
General
Assembly



The continuous support of the member states, private forest owners, forest industry and other major groups, as well as the outcome on forests in the Johannesburg Plan of Implementation are a testimony to the status of the Secretariat of UNFF, as the inter-regional facilitator and coordinator of the global implementation of the principle of sustainable forest management. UNFF also wishes to view its mandate within the context of the broader discussions within the UN system, such as the policy decisions and targets manifested in the Plan of Implementation of the Johannesburg Summit and the Millennium Development Goals. There are more than 40 international organizations and many more agreements related to forests. No single institution or instrument has a mandate or capacity to address all aspects of forest policy at all geographic scales.

In this respect the PEFC General Assembly decided to adopt a position statement on the further strengthening of the role of the UNFF as follows:

Position Statement on UNFF adopted by the PEFC Council 7th General Assembly.

Verbatim

The PEFC Council General Assembly held in Luxembourg on 31 October 2003 adopted the following position statement:

The PEFC supports the work of United Nations Forum on Forests (UNFF) and the strengthening and future development of UNFF as the principal body at the global level to achieve a balanced approach to Sustainable Forest Management (SFM).

The PEFC supports the further strengthening of the link between UNFF and PEFC in order to achieve the common goal of promoting SFM.

Editor Notes:

The Programme for the Endorsement of Forest Certification schemes (PEFC) is the framework for the mutual recognition of national or sub-national forest certification schemes.

Forest certification is an important tool in the implementation of SFM in the field and in particular it uses as a basis the criteria and indicator sets developed by various global and regional processes such as the MCPFE, Montreal, Tarapoto, Lepaterique, ITTO, Dry Zone Africa, Near East processes, etc.

UNFF is a policy mechanism to promote SFM in a holistic manner and as of now, UNFF is the key inter-governmental body for comprehensive, international forest policy formulation and implementation.

PEFC Council

17, rue des Girondins L-1626 Luxembourg
Tel : +352 26 25 90 59 Fax: +352 26 25 92 58
e-mail: pefc@pt.lu
www.pefc.org